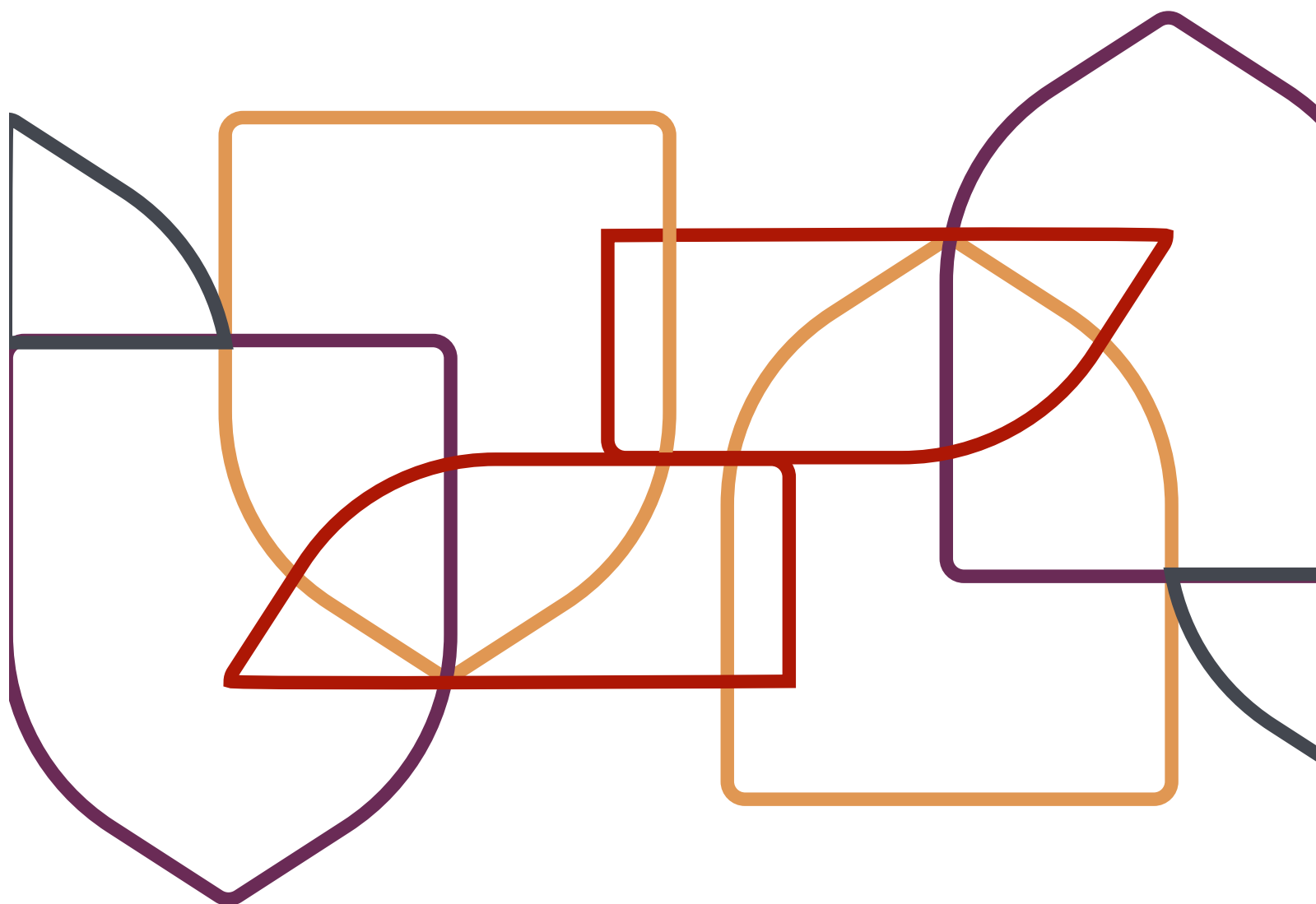


TE HAUMARU TUIHONO

Kuputaka



SPONSORED BY
C H ● R U S

 **netsafe**
netsafe.org.nz

Ngā Ihirangi

Ahokore tūmatanui	3
Āpiti	3
Ārai	3
Hara tāware	4
Hītinihanga	4
Hītori pūtirotiro	4
Hoko tuihono	4
Hononga māminga	5
Īmēra paraurehe	5
I-pāhi, Pāhi Matihiko rānei	5
Ipurangi, Pūtirotiro (tukutuku) rānei	5
Kuphipa	6
Mōhiohio whaiaro	6
Motuhēhēnga tukamaha (Motuhēhēnga tukarua, 2FA)	6
Motuhēhēnga tukarua	7
Pāhopori	7
Pihikete	7
Pūhara	7
Pūmanawa kino	7
Pūtirotiro tukutuku, ipurangi rānei	8
Tapuwae matihiko	8
Taupānga	8
Tāware	8
Tāwhai	9
Tikiake	9
Whakaweti ā-ipurangi, tuihono rānei	9
Whānako	9
Whānako tuakiri	10
Wheori	10
VPN	10

Whakahoungia tō mōhio ki ngā kupu matihiko mā te kuputaka a Netsafe. Mā te mārama ki ēnei kupu, ka haumarū ake koe i runga i te ipurangi.



Ahokore tūmatanui

Tērā pea ka tuku ngā wāhi tūmatanui i te wi-fi koreutu. He tūraru pea te hono ki ngā whatunga koreutu, nā te mea, kāore pea e tika ngā whakaritenga whakahaumarū, kei whakaraerae ō raraunga ipurangi ka haukotia. Kia tūpato te tuari i ngā mōhiohia pāwera i a koe e whakamahi ana i ngā wāhiwera wi-fi tūmatanui, whakamahia he VPN rānei ki te whakamaru i ō raraunga i runga i ērā whatunga.



Āpiti

Ko te āpiti īmēra tētahi kōnae rorohiko, puka, whakaahua rānei ka haere tahi me te karere. I mua i te huaki i tētahi āpiti īmēra, me whakaaro, i te tāria tēnei kōnae, i tukuna hoki e tētahi kaituku e mōhio ana koe e pono ana koe.



Ārai

Ko te tikanga o te ārai tuihono, ko te whakamahi i ngā āheinga hangarau, i ngā whakaritenga rānei ki te aukati i tētahi hunga tangata, paetukutuku rānei kia kore ai e pā ki a koe, ki ōu mōhiohia whaiaro rānei kei te ipurangi. Ko te āhua, he tauārai mariko, hei whakakore i ērā o ngā pānga, ihirangi tuihono rānei kāore e hiahiatia ana. Mā tā mātou rauemi 'Whakapūmau i te Hononga' koe e ako me pēhea.



Hara tāware

He tinihanga kino, taihara rānei, e aro ana ki te whiwahi moni, hua whaiaro rānei. Kia mataara, ehara i te mea he pono ngā kōrero katoa e kite ai koe kei te ipurangi. Ahakoa ko te nuinga o ngā tāngata he pono, arā ētahi atu tāngata kei te ipurangi, ka kōrero teka, i runga i te hiahia ki te nuka i a koe ki te tuari moni, tuari mōhiohia whaiaro rānei kia whiwahi huamoni ai rātou.



Hītinihanga

He īmēra, he karere, he paetukutuku tinihanga, e aro ana ki te tāhae i ngā mōhiohia whaiaro, i ngā moni rānei o ngā pārurenga. Kia haumaruru ake i ngā mahi hītinihanga, huakina kō ērā o ngā īmēra, ngā karere rānei kua tae mai i ngā tāngata e mōhio ana koe, e pono ana koe anake, ā, kua e pāwhiri i ngā hononga kei ngā karere. Mēnā ka hiahia koe ki te toro atu ki tētahi paetukutuku - whakamahia he pūrapu pērā i Google, Bing rānei.



Hītori pūtirotiro

Ko te hītori pūtirotiro, he mauhanga o ngā paetukutuku, whārangi tukutuku hoki kua toro ai koe i a koe e mahi ana i te ipurangi, ka pērā ki te makatea matihiko o āu mahi tuihono. Ka āwhina ina ka hoki anō koe ki ngā paetukutuku kua kite kē koe, ki te taki haere i āu whakamahinga ipurangi rānei. Kia auau tō ūkui i te hītori pūtirotiro i te tahua mō te tūmataiti me te haumaruru o tō pūtirotiro.



Hoko tuihono

Te hoko tuihono, te kurutete tuihono rānei. Whakamahia ngā paetukutuku whakawhirinaki, kua whiwahi hoki i ngā arotake pai, ā, tukuna ngā taipitopito pārongo ki ngā paetukutuku haumaruru anake. Rapua te tohu “https://” me te ata raka kei roto i te pae wāhitau, kia haumaruru ake ai ngā kurutete tuihono.



Hononga māminga

Ina whakaparo tō pehu ki runga i ngā hononga o runga i ngā karere, īmēra, wāhi tuihono hoki, tērā pea ka kite koe kāore i te hāngai te URL ka puta mō taua paetukutuku ki ngā whakamārama mō taua hononga. Hei tauria, kei te haere ki notsafe.org.nz kāore i te haere ki netsafe.org.nz. Kaua e pāwhiri i ngā hononga māminga.



Īmēra paraurehe

He whakawhitinga matihiko, kāore i te hiahiatia, kāore i tonoa, ā, ka horapa te tuku atu. Ka taea te whakamahi i ngā tātari īmēra ki te ārai i ngā kaituku īmēra paraurehe, te waihanga ture hoki hei tuku tōtika i aua īmēra ki te para. Pūrongo ngā īmēra paraurehe katoa ki te Tari Taiwhenua Department of Internal Affairs o Aotearoa – tuku whakamua ngā īmēra ki complaint@spam.govt.nz; ngā pātuhi ki 7726, ā, me whakahoki ki te urupare pātuhi o te DIA me te nama waea i tae mai ai taua karere paraurehe.

cert.govt.nz/individuals/common-threats/spam/



I-pāhi, Pāhi Matihiko rānei

He taupānga ahumoni, he pūhara e rokiroki ana i te mōhiohio utu me ngā kupuhipa (arā, Google Pay, Paypal, Afterpay).

Tirotiro i ngā arotakenga, ā, whakamahia ngā ratonga rongonui anake kia haumaruru ake ngā hoko.



Ipurangi, Pūtirotiro (tukutuku) rānei

He taupānga ka whakamahia ki te toro atu, ki te tirotiro hoki ki ngā mōhiohio me ngā paetukutuku kei te ipurangi. Tirohia ngā tautuhinga pūtirotiro mō ngā kōwhiringa ka taea kia haumaruru ake te tirotiro paetukutuku.



Kupuhipa

He waehere muna, rerenga muna rānei hei tiaki i ngā pūkete. Whakamahia he kupuhipa, kīangahipa kaha, motuhake hoki, he pūmatua, he nama, he tohu hoki kei roto kia kaha ake ai te whakamaru.

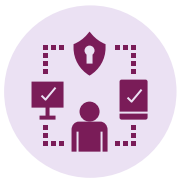


Mōhiohio whaiaro

He mōhiohio mōu, e taea te whakamahi ki te uru ki ō pūkete, te hanga i tētahi whaiaro tuihono tinihanga, te tāwhai i tō tuakiri, tae ana ki:

- Taipitopito takiuru me ngā kupuhipa ki ngā pūkete tuihono, tae ana ki ngā pēke, īmēra, pāhopori, me ngā paetukutuku hokohoko
- Ngā taipitopito pūkete pēke, kari taurewa hoki
- Wāhi noho
- Nama waea
- Rā whānau
- Ngā mōhiohio whaiaro e hono ana ki ngā pātai whakamaru kei ō pūkete tuihono
- Raihana motokā
- Taipitopito uruwhenua

Whakahaumaru i ō mōhiohio whaiaro, kia iti noa te tuari tuihono, hei piki i te whakamaru i ngā tāware.



Motuhēhēnga tukamaha (Motuhēhēnga tukarua, 2FA)

Ko tēnei he takahanga whakamaru anō me oti i a koe, i mua i te takiuru ki tō pūkete. Arā, hei tāpiri atu ki tō kupuhipa, me tuku koe i tētahi atu mōhiohio tuarua. Tērā pea he PIN (he nama tautohu whaiaro/personal identification number), makaurangi, waehere takiuru rānei mai i tētahi pūrere pono, te aha atu rānei. Whakaritea te motuhēhēnga tukarua mō ō pūkete, hei whakapiki i te whakamaru.



Motuhēhēnga tukarua

(2FA, motuhēhēnga tukamaha): Tirohia motuhēhēnga tukamaha.



Pāhopori

He pūhara tuihono, kei reira ngā kaiwhakamahi e waihanga kōtaha, tuari ihirangi, whakawhitiwhiti hoki tētahi ki tētahi. hei tauira, Facebook, LinkedIn, Snapchat, YouTube. Kia tūpato i te tuari i ngā mōhiohio whaiaro, kia tūpato kei tuari inati i a koe e whakamahi i ngā pāhopori hei ārai i te whānako tuakiri.



Pihikete

He wāhanga raraunga paku ngā pihikete, mā ngā paetukutuku e rokiroki ki tō rorohiko, i ngā wā ka toro atu koe ki aua paetukutuku. Ka āwhina i ngā paetukutuku ki te hopu i ōu kōwhiringa, ngā taipitopito takiuru, kia māmā ai te wheako, engari ka taea hoki te whakamahi ki te hopu mōhiohio i āu mahi tuihono.



Pūhara

Ko te pūhara tuihono, tētahi taiao matihiko ka tūhonohono i ngā tāngata, kia whakawhitiwhiti, ako, hokohoko, tākaro rānei. Tērā pea he paetukutuku, he taupānga rānei ka whakaāhei i te tangata ki te uru ki ētahi ratonga, āheinga rānei (hei tauira: pūhara pāhopori, pūhara itauhoko, pūhara ataata).



Pūmanawa kino

He pūmanawa rorohiko kino (hai tauira, he wheori rorohiko), ka taea te tūkinu, te whakararu, te urutomo ki ngā whakahaere o tētahi pūrere, te tāhae i ngā mōhiohio whaiaro rānei. Kia haumaruru ake tō pūrere, kua e huaki i ngā hononga māminga, ngā imēra māminga rānei, tikiake i ngā taupānga me ngā ihirangi mai i ngā pūtake pono anake, whakamahia he taupānga ārai wheori, ā, kia auau te whakahou i ngā pūmanawa me ngā taupānga kia haumaruru ai tō pūrere.



Pūtirotiro tukutuku, ipurangi rānei

He taupānga ka whakamahia ki te toro atu, ki te tirotiro hoki ki ngā mōhiohio me ngā paetukutuku kei te ipurangi. Tirohia ngā tautuhinga pūtirotiro mō ngā kōwhiringa ka taea kia haumaruru ake te tirotiro paetukutuku.



Tapuwae matihiko

Ko ēnei ngā maramara o ō mōhiohio whaiaro me āu mahi i a koe e whakamahi ana i te ipurangi. Kia mārama ai tō tapuwae, rapua tō ingoa kei runga i te ipurangi, kia kitea ngā mea e whakaaturia. I te tuari i ngā ihirangi tuihono, kāore pea e taea te whakatau ko wai ka taea te kite, nā reira me whai whakaaro ko wai te hunga mātakitaki i mua i te tuari.



Taupānga

He momo pūmanawa o ngā pūrere matihiko. Āta tirohia ngā whakaaetanga o ngā taupānga kei runga i tō pūrere, ki te ārai i te rahi o ngā mōhiohio whaiaro e kohikohia e tuarhia rānei mōu.



Tāware

He kōrero tipatipa te tāware, kua hangaia ki te tinihanga i ngā moni o te tangata, te tāhae rānei i ōna mōhiohio whaiaro. Whakamahia **TĀHAE** (SCAMS) ki te hopu i ngā haki whero auau mō ngā tāware: **Tūmeke** (Surprise), **Āki** (Controlling), **Hou mai** - he tono uru (Access), **Auē! He tono moni** (Money). Kia tūpato ki ngā tāngata ka whakawhitiwhiti koe i runga i te ipurangi, ā, kore rawa e tuku moni ki te tauhou, ki te tangata kāore anō koe kia tūtaki ā-kanohi hoki. Mēnā he haki whero, ka anipā rānei koe i te kōrero, **E Tū**, kāti te whakawhitiwhiti, kimihia he āwhina mai i tō whānau, ā, whakapā atu ki Netsafe mō ngā mahi ka whai ake.



Tāwhai

He mahi tinihanga kia whakapono tētahi ko koe tētahi tangata kē, ka whakamahia kia whakapiki i te pono, ki te nuka i te tangata hoki ki te tuari i ngā mōhiohio whaiaro, i ngā moni rānei. Kia mātaara, ka kore pea te tangata i tūtaki ai koe ki runga i te ipurangi i te tangata e kī ana rātou.



Tikiake

Mā te tikiake, ka whakawhiti tētahi kape o te kōnae matihiko (pērā ki te tuhinga Word, pdf, ataata rānei) ki tō pūrere, ka kīia hoki te 'download'. I mua i te tikiake me te huaki i te kōnae, whakaarohia mēnā e pono ana koe ki te pūtake, mēnā e mōhio ana koe he aha kei roto i te kōnae. Ka whai painga te tiroiro i te momo kōnae, mēnā e hāngai ana ki ō whakaaro mō ngā ihirangi o te kōnae hei tauira mēnā he tuhinga pārongo, me mutu te ingoa kōnae ki te .pdf, .doc tētahi atu pērā.



Whakaweti ā-ipurangi, tuihono rānei

Tētahi tangata kei te āta mahi, kei te **auau** te mahi hei tuku pāmamae ki tētahi atu tangata tuihono, mā te waea pūkoro, tētahi atu pūrere tāhiko rānei. Pūrongo atu i te whakaweti ki te pūhara kei reira ngā kōrero, ki Netsafe hoki. Whakamahia ngā tautuhinga whakamaru ki te ārai i ngā tāngata tūkino, kia tiakina ai koe.



Whānako

Ko te whakamahi i tētahi paetukutuku ki te mātakitaki, ki te pānui rānei i ngā ihirangi koreutu, engari ko te tikanga ka utua aua ihirangi. Ko te tikiake (pāho tikinoa rānei) o te puoro, kiriata, whakaaturanga pouaka whakaata rānei mō te koreutu he mea whakawai, engari he pai ake pea kia whakataha. Ko ngā paetukutuku e tuku ana i ēnei ratonga he wāhi haumaru-kore, kāore e kore kua kī rawa i ngā hononga whakakino, ngā taupānga tikiake kino hoki.



Whānako tuakiri

Ko te whakamahi kore whakaae o te mōhiohio whaiaro o tētahi atu tangata, i te nuinga o ngā wā ko te huamoni te aronga. Kia tūpato te tuari i ngā mōhiohio whaiaro tuihono – tae ana ki ngā mōhiohio waiwai pērā ki tō huritau me tō wāhi noho, ka whakamahia pea ki te tāwhai i tō tuakiri mō tētahi hara tāware.



Wheori

He momo taupānga kino, ka horapa haere mā te whakapiri ki ētahi atu kōnae, taupānga rānei, ā, ka whakakino, ka tāhae mōhiohio rānei. Kia tūpato ki ngā kōnae rorohiko, mō ngā āpiti īmēra e tikiake ana koe, e huaki ana koe rānei.



VPN

Whatunga Tūmataiti Mariko (VPN). Tikiake i tētahi VPN, hei whakamuna i ngā raraunga e tuku ai koe mā te wifi, kia haumarua ake te whakamahi o ngā whatunga wifi tūmatanui. Ka āhei ēnei kei roto i ngā kete whakahaumarua, ārai-kowheori rānei mō tō pūrere, pērā ki te Norton, AVG rānei.

Ētahi atu rauemi

Kua waia koe ināianei ki ngā kupu matihiko matua. Ako tonu i ngā kaupapa Kia Rite, Kia Haumaruru, mā te toro atu ki [netsafe.org.nz/olderpeople](https://www.netsafe.org.nz/olderpeople), tae ana ki:

- **Whakapūmau i te hononga**

Akona ngā mōhiotanga matua o ngā pae pāhopori, me te ara ki te panoni i ngā ritenga tūmataiti, whakamaru hoki, kia haumaruru ai te whakaporipori tuihono.

- **Hopukina he tāware**

Ko te tāware, tētahi kōrero tipatipa, hei tinihanga i te tangata ki te tāhae i ā rātou moni, mōhiohio rānei. Ākona me pēhea te kite i ngā haki whero.

- **He pūrere ratarata kaiwhakamahi**

Whakaritea tō pūrere kia ngāwari ake, haumaruru ake hoki te whakamahi.

- **Kia haumaruru ake ai te hokohoko, te haumi me ngā mahi pūtea pēke tuihono**

Ākona me pēhea koe e kaupare i ngā tāware, ā, me aha ina ka puta he raru.

- **Whakamarutia ō pūrere**

Whakaritea ō pūrere (waea, ī-papa, rorohiko, te aha, te aha) mō te haumaruru, kia māmā ai te whatumanawa i a koe e mahi tuihono ana.

Mēnā he āwangawanga ōu mō tētahi putanga, kei te hiahia rānei i ngā tohutohu anō, ka kitea he mōhiohio anō kei te paetukutuku o Netsafe, arā, kei netsafe.org.nz.

Kei konei mātou mōu. Mēnā ka hiahia koe i te āwhina, ka pāngia rānei e te pāmamae tuihono, whakapā mai ki Netsafe.



Waea ki
0508 638 723



Toro atu ki
netsafe.org.nz



report.netsafe.org.nz

SPONSORED BY
C H ● R U S

 **netsafe**
netsafe.org.nz